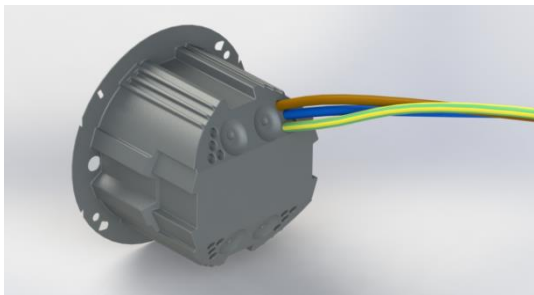


Montage inzetstukken holle wanddozen

Mounting inserts hollow wall boxes

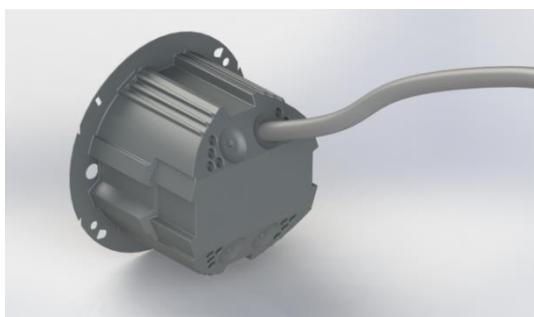
L'assemblage de l'insert de boîte d'encastement pour cloison creuse



Draden invoeren (zonder gereedschap)

Enter wires (without tools)

Entrer les files (sans outils)

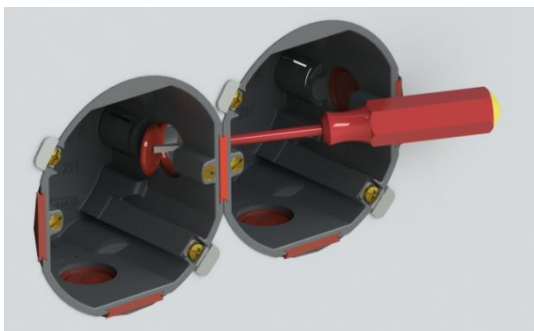


Kabel invoeren (gereedschap niet benodigd)

Enter cable (tools not required)

Entrer le câble (outils ne pas nécessaires)

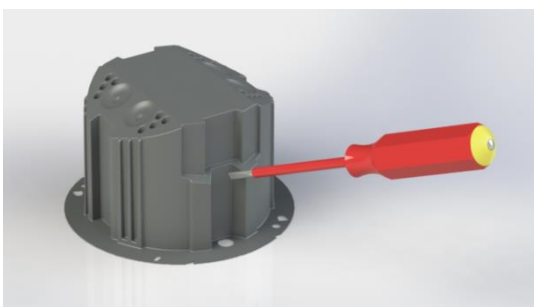
Bedraden van gekoppelde dozen - To wire coupled boxes - Câbler des boîtes association



Poort uitbreken

Open knockout

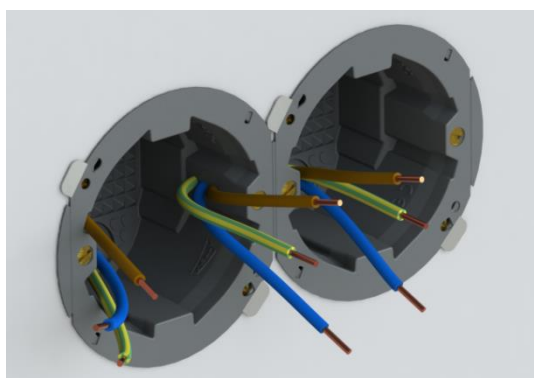
Ouvrir l'entrée



Maak een opening in het inzetstuk

Puncture the insert

Piquer l'insert



Bedrading doorvoeren

Put wires through opening

Percer les fils