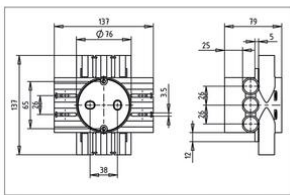


Central junction boxes hollow ceiling



CH75R Ceiling Junctionbox hollow ceiling Ø 16/19 mm

- Suitable for rachel ceilings and metal stud ceilings.
- Application: thick(er) ceiling tiles (e.g. 2 x 12.5 mm plasterboard).
- 45% more welding space than a traditional square central box.
- 12 combi spouts 16 and 19 mm.
- Equipped with conical tube inlet with tube snapper.
- Screw slots between the pipe entries.
- Screw cams for bottom mounting.
- Clamps: a 3rd hand for rachels 22 mm.
- Suitable for cable entry in combination with KST (art. no. AT1062).
- Matching covers: (art. no. AT5010 and art. no. AT5011).



Article no:	AT1005
EAN:	8712259324821
Halogen free	Yes
Amount Packaging	25 st.
Conduit diameter	16 / 19 mm
Ø circular saw	76 mm
Outer size	79 mm
Mounting method	Hollow ceiling
Degree of protection (IP)	IP20
Material	Plastic
Width	76 mm
Length	76 mm
Diameter	76 mm
Colour	Grey
Model	Single
Surface protection	Untreated
Cover model	None
Inner depth	77 mm
Degree of protection (NEMA)	-
Circuit integrity	None
Equipped with	None
Shape	Round
Depth	77 - 77 mm
Pipe locking	Yes
Suitable for cable diameter	8 - 12 mm
Construction type	Central conduit box
Number of inlets	12
Air tight	No
For tube diameter	16/19 mm
Max. conductor cross section	6 mm ²
Inlet from the rear	No
Transparent cover	No
Cover attachment	Screwed
Sealable	No
With screening	No
Provided with revolving ring	No
Couplable	No

For number of electric fittings	
Mounting switching equipment	Screwing
Suitable for wall/board thickness	20 - 25 mm
With screws	No
Number of non-adjustable device fixing lugs	
Number of adjustable device fixing lugs	
Housing feed-through by break-out opening	No
Housing feed-through by seal membrane	No
Housing feed-through by nozzle	No
Housing feed-through by step membrane	No
Pipe locking optional	No
Number of included spouts	
Number of poles of the clamp	
Clamp position fixed	No
Luminaire hook mounting	No
Nozzle	Tunnel branch pipe
Special application	None
With partition panel	No
Compliant with BS 4662	No
Dispatch	25

The junction boxes for hollow ceilings can be used in any situation in the hollow ceiling structure. In rachel wood ceilings (eg. 18 mm and 22 mm) and metal Metal Stud ceilings (eg. 27 mm). Suitable for ceiling panel thicknesses of eg 9.5 mm, 12.5 mm and 25 mm. Applicable in standard and fire-resistant ceiling structures. The round shape of the junction boxes is easily applied in the ceiling plate when drilling the correct hole diameter (Ø 76 mm). The ceiling junction boxes are equipped with 12 combi-inlets. Suitable for 16 mm or 19 mm conduits and cable (via cable strain relief, Art. No. AT1062). The junction boxes can be performed pluggable with WINSTA RD connectors.